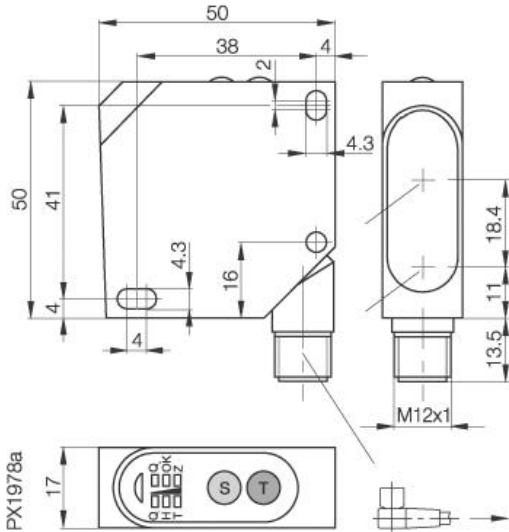


Photoelectric Sensor BOD 26K-LB04-S115-C Sn=100mm Distancesensor



Common Data

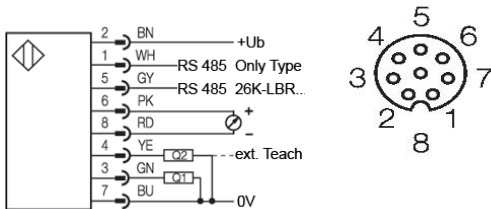
Series	BOD
Sensortype	Distancesensor
Switching frequency	1000 Hz
Rated operating distance Sn in mm	100
asured operating distance Sa	30...100mm
Indication Supply Voltage	yes
Ambient temperature	-10...+60°C
Light	Laser, red, 650nm, Protection
class 2	
Blind zone / min Reflector distance	30mm
Special function	Analog output 4...20mA
Output function	analog

Mechanical Data

Measurements	50X50X17
Housing material	ABS impact resistant
Material of sensing face	PMMA
Degree of protection	IP67
Connection	Connector S115
Weigth	43g
Recommended connector	BKS-S139-PU-05

Electrical Data

Current	DC
Switching function	analog / normally-open
Output	4...20mA/PNP
Rated operational voltage Ue	24V
Rated operational current Ie	100mA
Supply Voltage	18...30V
Frequency of Supply Voltage	DC
No-load supply current	<40mA
Short protection	yes
Protected against polarity reversal	yes
Output resistance	≤500 Ohm at Analog-Out



Utilization categories
Insulation class

Datasheet number:

Definitions see general catalog.
If not otherwise noted, ratings according to
IEC 60947-5-2 (DIN EN60947-5-2)

Balluff GmbH
Schurwaldstrasse 9
73765 Neuhausen a.d.F.
Phone (07158) 173-0 Fax (07158) 5010

Datenblatt by CD-ROM - 04/2007

BALLUFF
sensors worldwide